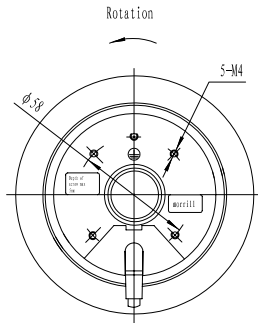
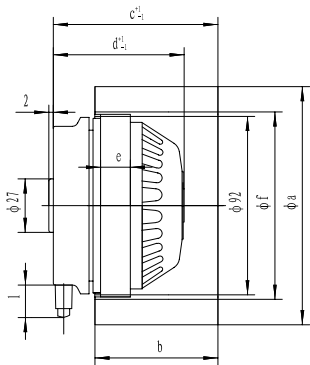


Centrifugal Impeller

with external rotor motor



- * Metal forward curve impeller
- * Self resetting thermal cutout
- * Continuous rating
- * Ball bearings

Type	a	b	c	d	e	l	f
RF2C-120/062	120	62	83	63	15	500	96
RF2C-133/046	133	46	65	63	15	500	108
RF2C-140/59H	140	59	72	83	35	500	121
RF2C-140/059	140	59	72	73	25	500	121
RF2C-160/062	160	62	92	83	35	500	127
RF4C-180/075	180	75	83	73	25	500	149

Type

Voltage

Frequency

Speed

power input

Current

Capacitor

Insulation

Protection

Amp. temp.

RF2C-120/062

230V

50Hz

1750 min⁻¹

75W

0.4A

2UF/450V

CL. B

IP44

45 ° C

RF2C-133/046

230V

50Hz

2475 min⁻¹

70W

0.3A

2UF/450V

CL. B

IP44

45 ° C

RF2C-140/59H

230V

50Hz

2100 min⁻¹

175W

0.6A

5UF/450V

CL. B

IP44

45 ° C

RF2C-140/059

230V

50Hz

2050 min⁻¹

120W

0.52A

2UF/450V

CL. B

IP44

45 ° C

RF2C-160/062

230V

50Hz

1635 min⁻¹

195W

0.84A

5UF/450V

CL. B

IP44

45 ° C

RF4C-180/075

230V

50Hz

1150 min⁻¹

96W

0.41A

2.5UF/450V

CL. B

IP44

45 ° C